

DSP700 Alignment Sensors

Quick, accurate measurement readings at an economical price



Fast, accurate alignment at an economical price!



EXCLUSIVE

Reversible setups

Interchangeable front and rear sensors avoid obstructions such as air dams or spoilers



Traditional toe arms in front...



... or mounted in rear to avoid obstructions!



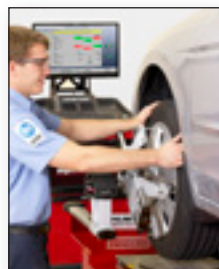
Pro-Comp® Compensation

Continuous runout compensation procedure ensures accurate alignment angles, even if wheels rotate after compensation.



Wireless functionality

No cumbersome cables to connect



Fast measurement readings

Obtain precise data measurements for toe, toe-out-on-turns, track width and wheelbase in real-time.



Quick recharge

Sensors recharge while they are mounted on the aligner



Weights less than 7.5 lbs.

Engineered with your technician in mind, DSP700 sensors are up to 50% lighter than previous models.

Greater versatility helps service more vehicles

Hunter's innovative self-centering wheel adaptor

- ✓ Easy to use
- ✓ Lightweight, durable construction
- ✓ Fits a wide range of wheel configurations and sizes



Adaptable rim studs

Fits steel or specialty rims with run-flat and flange-guard tires.



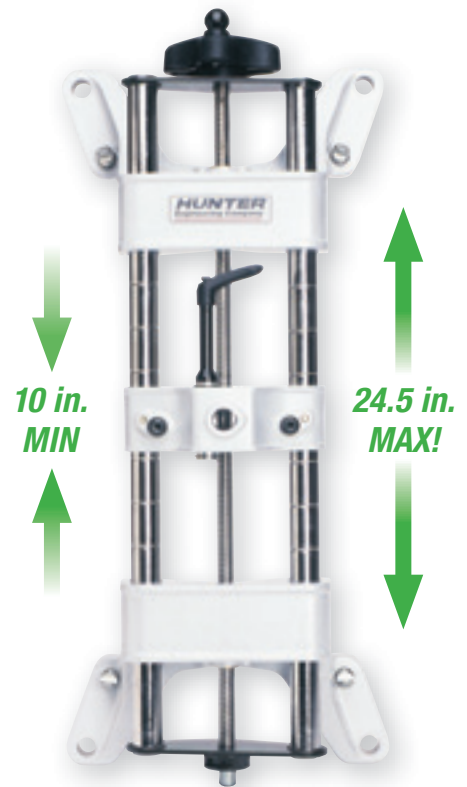
Sturdy design

Durable, lightweight design provides rigidity and stability.



Extended range

Stud slots extend coverage from 10 to 24.5 inches.

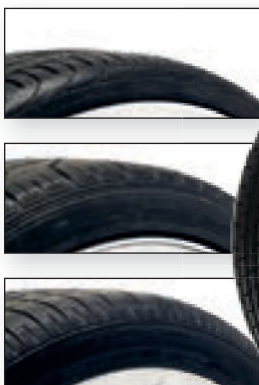


Extend range of service with these options

OPTIONAL

Tire clamp adaptor fits difficult wheels

- ✓ Fastens to tires with 21 to 40 in. outside dimension
- ✓ Includes 4 tire clamps with protective rim sleeves



Ideal for use on wheels without rim lips or when space between tire and rim is limited.



OPTIONAL

Extensions expand coverage

- ✓ Expands adaptor range up to 28 in.
- ✓ Includes 16 adaptor extensions, 4 for each adaptor



DSP700 series feature comparison



	DSP706	DSP708
Full four-wheel alignment capability	✓	✓
High-speed wireless communication	✓	✓
Pro-Comp® continuous compensation	✓	✓
Two-point compensation option	✓	✓
F2R (Front-to-Rear) sensor mounting	✓	
Cal-Check® toe calibration		✓
Toe-out-on-turns measurement	✓	✓
Level Reminder® on-screen leveling	Front only	✓
Sensor locking mechanism	✓	✓
Compatible with special adaptors	✓	✓
Interrupted measurement retention	✓	✓
Light-weight construction	✓	✓

Specifications

Power	3.6vdc (6 rechargeable NiMH AA batteries)
Cordless (standard)	2.4GHz direct-sequence, spread-spectrum transmitter
Sensor weight	
Short toe arm	6.50 lbs.
Long toe arm	7.25 lbs.
Sensor dimensions	
Short toe arm	13.5 in. (L) x 7.4 in. (W) x 10.5 in. (H)
Long toe arm	27.5 in. (L) x 7.4 in. (W) x 10.5 in. (H)
Clamping range	10 - 24.5 in. (standard) 28 in. (with extensions)
Wheelbase	70 - 210 in.
Track width	46 - 90 in.
Sensor body	Impact-resistant rubber
Toe arm	Magnesium

DSP700 alignment sensors require Hunter alignment systems running WinAlign® version 11.1 (or greater) or ProAlign® version 1.10 (or greater).

Because of continuing technological advancements, specifications, models and options are subject to change without notice.

WinAlign, ProAlign, Hawkeye, Hawkeye Elite, WinToe, Shim-Select, Pro-Comp, Level Reminder, Cal-Check, CodeLink, ExpressAlign, WebSpecs, HunterNet, QuickGrip and QuickComp are registered trademarks of Hunter Engineering Company.

HUNTER
Engineering Company

www.hunter.com